

Wormgear capstans

Selfbraking worm gear drives with electric, hydraulic or even pneumatic motor, available in on-deck or below-deck built types. The on-deck drive is equipped with a waterproof motor for intermittent use. The below-deck drive is equipped with a dripwater proof motor and a mounting plate with extra self aligning bearing suitable for high static loads such as with mooring ropes. Pneumatic drives are available upon request.

Planetary capstans

Featuring a cast iron capstan head mounted on a heavy duty planetary gearbox. The entire drive is mounted in a watertight tube frame providing optimal protection from the elements. Pneumatic drives are available upon request.

Standard features:

- Heavy duty worm gearbox or planetary gearbox
- IP 54 aluminium braked motor 400 VAC / 3 phase / 50 Hz for planetary capstans
- IP 56 TENV cast iron un braked motor 400 VAC / 3 phase / 50 Hz for on-deck worm gear capstans
- IP 54 cast iron un braked motor 400 VAC / 3 phase / 50 Hz for under-deck worm gear capstans
- Single speed and one direction only (for electric capstans only)
- Orbit or radial piston type hydraulic motor
- Vertical cast iron warping head
- Double layer 2 component conservation, colour BS 20 (Medium Blue)

Available control options:

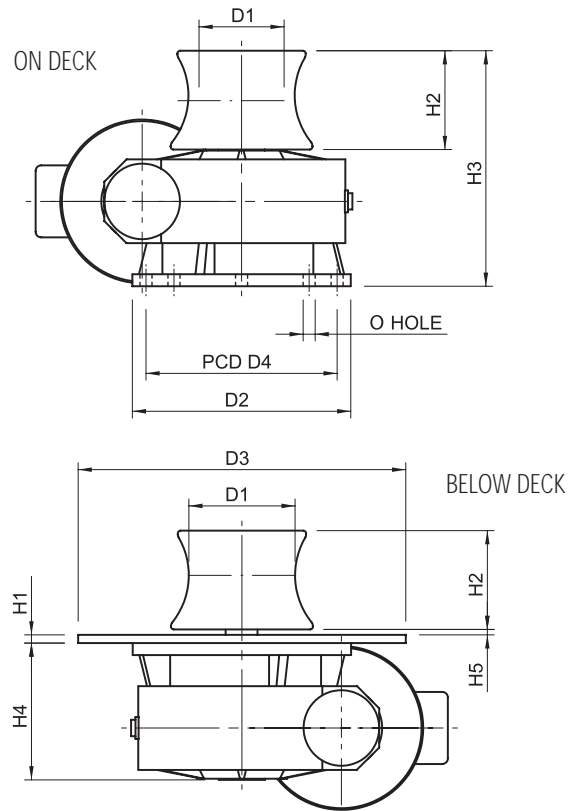
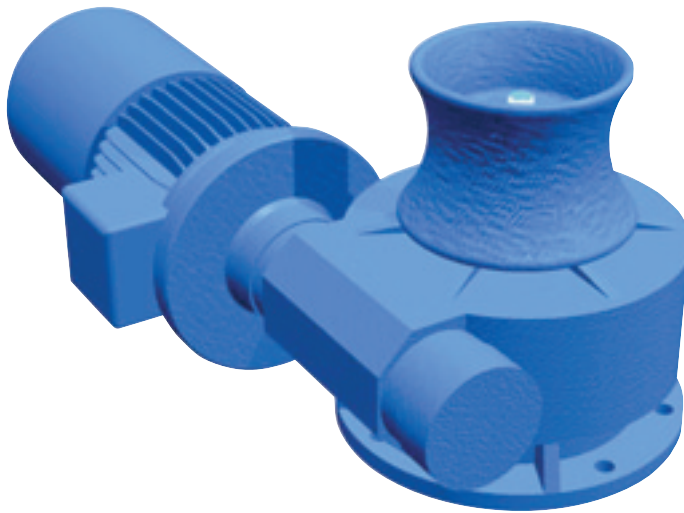
- Control box IP 55 with IP 65 foot pedal (single speed, one direction) control built acc. to NEN 1010
- Control box IP 55 with IP 65 foot pedal (two speed, two directions) control built acc. to NEN 1010
- Frequency inverter and proportional foot pedal for variable speed control
- Proportional local or remote control valve (pneumatic or hydraulic)

Capstan type	W.L.L. kg.	Speed m/min.	Neck diameter mm.	Recomm. rope diam. mm.	Motor power 400 VAC kW	Pressure drop in bar	Flow in l/min.
E 100	600	8	100	18	0,75		
E 140	1300	9	140	25	2,2		
E 200	1800	11	200	36	4		
H 100	600	8	100	18		50	20
H 140	1300	8	140	25		60	30
H 200	1800	11	195	36		100	50

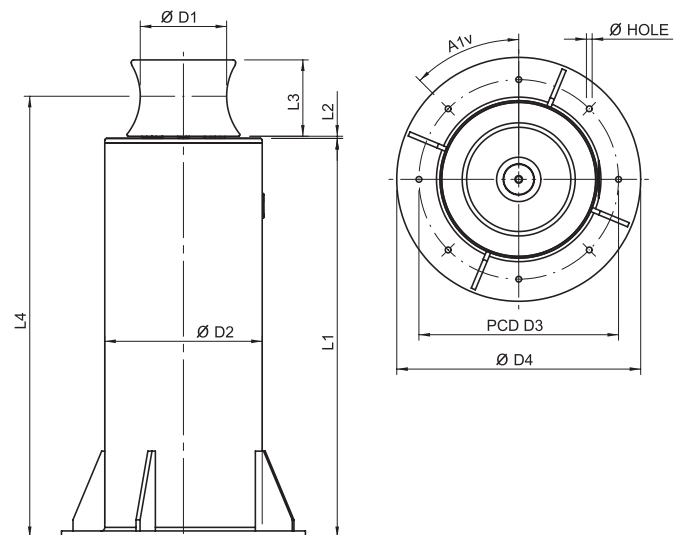
Available options:

- Cast iron motor for planetary capstans
- Explosion proof motors
- Back stop bearing built in planetary gearbox for one direction (replaces brake)
- Alternative speeds
- Alternative supply voltages
- Horizontal warping head configuration
- Marine / offshore coating systems

Capstan type	W.L.L. continuous kg.	W.L.L. 30% interm. kg.	Speed m/min.	Neck diameter mm.	Recomm. rope diam. mm.	Motor power 400 V kW	Pressure drop in bar	Flow in l/min.
C 300 E	1000	1300	12	195	35	2,2		
C 303 E	2000	3000	11	195	35	4		
C 305 E	3200	4000	12	275	45	7,5		
C 307 E	5000	6500	13	405	75	11		
C 309 E	7500	10000	12	405	75	15		
C 300 H	1300	1300	20	195	35		100	32
C 303 H	3000	3000	23	195	35		170	48
C 305 H	4000	4000	25	275	45		215	53
C 307 H	6000	6000	30	405	75		205	100
C 309 H	10000	10000	20	405	75		200	115



Type	Mass (kg)	D1	D2	D3	D4	H1	H2	H3	H4	H5	Hole Ø
E 100 / H 100	50	100	210	300	176	10	130	320	190	10	8x 12,5
E 140 / H 140	90	140	320	420	255	15	130	360	230	10	8x 16
E 200 / H 200	130	195	350	450	290	15	180	415	245	10	8x 18



Type	Mass (kg)	D1	D2	D3	D4	L1	L2	L3	L4	A1	Hole Ø
C 300	175	195	355	450	550	900	5	181	995	8x 45	13
C 303	220	195	406	500	600	1000	5	181	1095	12x 30	18
C 305	320	275	455	570	650	1100	5	210	1205	12x 30	18
C 307	800	405	610	700	800	1300	5	315	1455	12x 30	18
C 309	900	405	610	720	825	1300	5	315	1455	12x 30	22